

Engineering Specification

Job Name _____

Contractor's Signature _____

Orion Representative _____

Approval Date _____

Quantity Required _____

Contractor's P.O. No. _____

Note: All Tank / SI Drawings Must be Signed off and Accompany PO Before Product will be Manufactured.

SI6 Cylindrical Flush-with-Floor Sediment Interceptor

Specification

Orion SI6 1.9 SP natural HDPE seamless rotomoulded construction, 1" plastic lid + 1/8" checkerplate aluminum cover gasketed and bolted to tank, with single inlet and outlet heat fused to tank, with HDPE sediment basket with 1/8" perforations. SI6 units greater than 18" diameter come with 10" port and port cover gasketed and bolted to lid with checkerplate aluminum top cover.

Call customer service if you need assistance with technical details.

Tank Size

Capacity	Dimensions	Model No.	Selection
Empty/Effective <i>imp. gal</i>	Diameter x Height <i>in.</i>	Model No. <i>#</i>	<i>(Please check appropriate box)</i>
5/2	11 x 16 1/2	5	
12/4	13 x 28 1/2	12	
15/5	17 x 19 1/2	15B	
25/8	17 x 31 1/2	25B	
45/15	22 x 34 1/2	45	
60/20	22 x 46 1/2	60	
100/33	30 x 41 1/2	100	

Options

Tank Extension (calculated by Orion) (Check to Add)

Connection Size (check FIPT or MJ)

Connection Size (check FIPT or MJ)	FIPT	MJ
15	1 1/2" - in / out	
20	2" - in / out	
30	3" - in / out	
40	4" - in / out	

**Please verify all selections with your local Orion rep - tanks are not returnable.
Made in Canada**

NOTICE

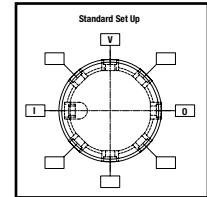
The information contained herein is not intended to replace the full product installation and safety information available or the experience of a trained product installer. You are required to thoroughly read all installation instructions and product safety information before beginning the installation of this product.

Orion product specifications in U.S. customary units and metric are approximate and are provided for reference only. For precise measurements, please contact Orion Technical Service. Orion reserves the right to change or modify product design, construction, specifications, or materials without prior notice and without incurring any obligation to make such changes and modifications on Orion products previously or subsequently sold.

Standard Connection Locations

Inlet-at 9:00 and 7" down from top of tank cover **Outlet**-at 3:00 and 7" down from top of tank cover

If standard locations are desired, check this box

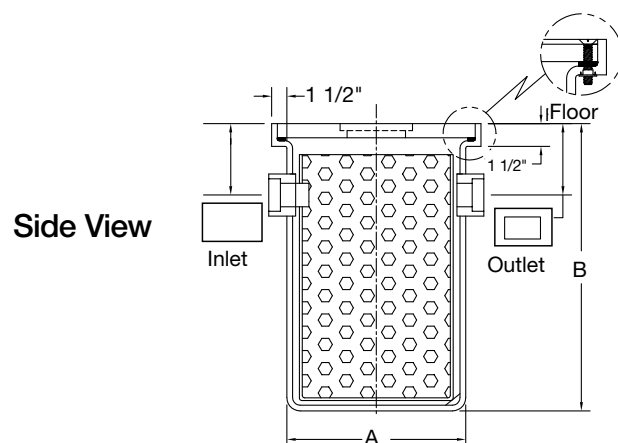
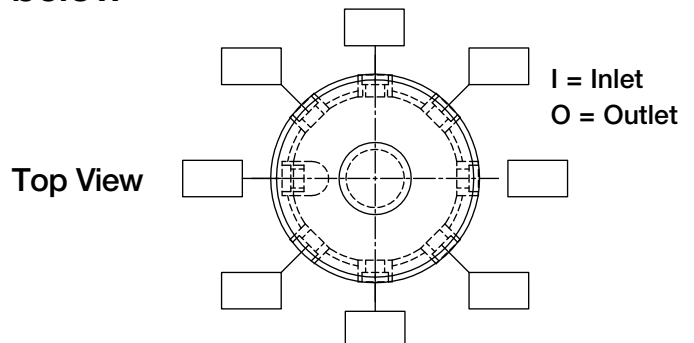


OR

If requirements differ from standard, please indicate clearly on both top and side views illustrated below. Include location of any extra fittings in boxes provided.

If custom locations are desired, check this box

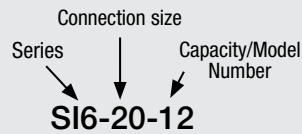
Mark custom connection locations below



A WATTS Brand

Chart Selection Example:

Series **SI6** interceptor with **2 inch** connections and **12 gallon** capacity. Would be Mfg. No **SI6-20-12** on the chart below.



Part No.	UPC	Mfg. No.	Descriptions
8503619	-	SI6-15-5	Flush-With-Floor HDPE Plastic Sed. Int., 5 Imp. Gal., 1.5" Conns.
8503620	-	SI6-20-5	Flush-With-Floor HDPE Plastic Sed. Int., 5 Imp. Gal., 2" Conns.
8503621	-	SI6-30-5	Flush-With-Floor HDPE Plastic Sed. Int., 5 Imp. Gal., 3" Conns.
8503622	-	SI6-40-5	Flush-With-Floor HDPE Plastic Sed. Int., 5 Imp. Gal., 4" Conns.
8503624	-	SI6-15-12	Flush-With-Floor HDPE Plastic Sed. Int., 12 Imp. Gal., 1.5" Conns.
8503625	-	SI6-20-12	Flush-With-Floor HDPE Plastic Sed. Int., 12 Imp. Gal., 2" Conns.
8503626	-	SI6-30-12	Flush-With-Floor HDPE Plastic Sed. Int., 12 Imp. Gal., 3" Conns.
8503627	-	SI6-40-12	Flush-With-Floor HDPE Plastic Sed. Int., 12 Imp. Gal., 4" Conns.
8503629	-	SI6-15-15B	Flush-With-Floor HDPE Plastic Sed. Int., 15 Imp. Gal., 1.5" Conns.
8503630	-	SI6-20-15B	Flush-With-Floor HDPE Plastic Sed. Int., 15 Imp. Gal., 2" Conns.
8503631	-	SI6-30-15B	Flush-With-Floor HDPE Plastic Sed. Int., 15 Imp. Gal., 3" Conns.
8503632	-	SI6-40-15B	Flush-With-Floor HDPE Plastic Sed. Int., 15 Imp. Gal., 4" Conns.
8503635	-	SI6-20-25B	Flush-With-Floor HDPE Plastic Sed. Int., 25 Imp. Gal., 2" Conns.
8503636	-	SI6-30-25B	Flush-With-Floor HDPE Plastic Sed. Int., 25 Imp. Gal., 3" Conns.
8503637	-	SI6-40-25B	Flush-With-Floor HDPE Plastic Sed. Int., 25 Imp. Gal., 4" Conns.
8503641	-	SI6-30-45	Flush-With-Floor HDPE Plastic Sed. Int., 45 Imp. Gal., 3" Conns.
8503642	-	SI6-40-45	Flush-With-Floor HDPE Plastic Sed. Int., 45 Imp. Gal., 4" Conns.
8503646	-	SI6-30-60	Flush-With-Floor HDPE Plastic Sed. Int., 60 Imp. Gal., 3" Conns.
8503647	-	SI6-40-60	Flush-With-Floor HDPE Plastic Sed. Int., 60 Imp. Gal., 4" Conns.
8503651	-	SI6-30-100	Flush-With-Floor HDPE Plastic Sed. Int., 100 Imp. Gal., 3" Conns.
8503652	-	SI6-40-100	Flush-With-Floor HDPE Plastic Sed. Int., 100 Imp. Gal., 4" Conns.

*Non-cancelable, non-returnable

Related Items: T6 Neutralization Tank, pH Monitor System, Acid Neutralizing Chips, Sampling Tank



A WATTS Brand

USA: T: (800) 334-6259 • OrionFittings.com

Canada: T: (888) 208-8927 • OrionFittings.ca

Latin America: T: (52) 55-4122-0138 • OrionFittings.com