

MasterSeries® Backflow Preventers

Industry's Most Versatile Line of Backflow Prevention Assemblies



FEBCOonline.com

FEBCO®

A **WATTS** Brand



The Lead Free MasterSeries® backflow prevention assemblies have been redesigned for superior performance.

Features & benefits:

- Investment-casted stainless steel internal components for extended valve life and reduced maintenance
- Superior stainless steel check valve design to reduce pressure loss
- Compact N-pattern available for installation in tight quarters
- Small form factor reduces enclosure size for cost savings
- N-pattern valve setters available for complete installations
- Lead Free* construction to comply with national lead free plumbing regulations

And there's more!
Our state-of-the-art backflow preventers offer:

- Horizontal, vertical-up/vertical-down, and vertical-up/vertical-up orientations
- Full Lead Free certification to NSF 61G standards on select models



Serving a
Wide Range of
Application Needs

The MasterSeries line of backflow preventers are designed for varying applications, including:

- Fire suppression systems
- Potable water supplies
- Agricultural and municipal irrigation

A Complete Family of Backflow Preventers for All Your Application Needs



LF850-NRS

LF850

Double check valve assembly

2 1/2" – 10"

- Non-health hazard (pollutant) applications
- Horizontal orientation



LF870V-NRS

LF870V

Double check valve assembly

2 1/2" – 8"

- Non-health hazard (pollutant) applications
- N-pattern orientation
- For tight spaces



LF856-DCDA-OSY

LF856

Double check detector assembly Type II

2 1/2" – 10"

- Non-health hazard (pollutant) applications
- Horizontal orientation



LF876V-DCDA-OSY

LF876V

Double check detector assembly Type II

2 1/2" – 8"

- Non-health hazard (pollutant) applications
- N-pattern orientation
- For tight spaces



LF860-FS-NRS

LF860-FS Large

Reduced pressure zone assembly

2 1/2" – 10"

- High hazard (toxic) applications
- Horizontal orientation
- Sensor for flood detection; add-on kit required for activation; compatible with BMS and cellular communication for alerts



LF880V-FS-NRS

LF880V-FS

Reduced pressure zone assembly

2 1/2" – 8"

- High hazard (toxic) applications
- N-pattern orientation
- For tight spaces
- Sensor for flood detection; add-on kit required for activation; compatible with BMS and cellular communication for alerts



LF866-FS-OSY

LF866-FS

Reduced pressure detector assembly Type II

2 1/2" – 10"

- High hazard (toxic) applications
- Horizontal orientation
- Sensor for flood detection; add-on kit required for activation; compatible with BMS and cellular communication for alerts



LF886V-FS-OSY

LF886V-FS

Reduced pressure detector assembly Type II

2 1/2" – 8"

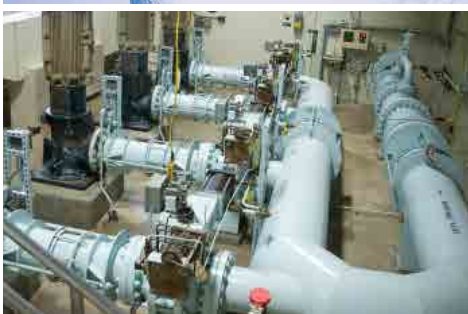
- High hazard (toxic) applications
- N-pattern orientation
- For tight spaces
- Sensor for flood detection; add-on kit required for activation; compatible with BMS and cellular communication for alerts

*The wetted surface of this product contacted by consumable water contains less than 0.25% of lead by weight.

For technical and ordering assistance, call us at 800-767-1234.

To locate your nearest FEBCO® representative, visit Rep Locator on FEBCOonline.com.

Redesigned for Enhanced Performance



Serving a Wide Range of Application Needs

Partner with FEBCO

- Extensive product offering from a single vendor
- Industry leader with a large installed base
- Durable designs fabricated with high-grade materials
- High performance valves with exceptional flow characteristics



A WATTS Brand