

Engineering Specification

Job Name _____

Contractor _____

Job Location _____

Approval _____

Engineer _____

Contractor's P.O. No. _____

Approval _____

Representative _____

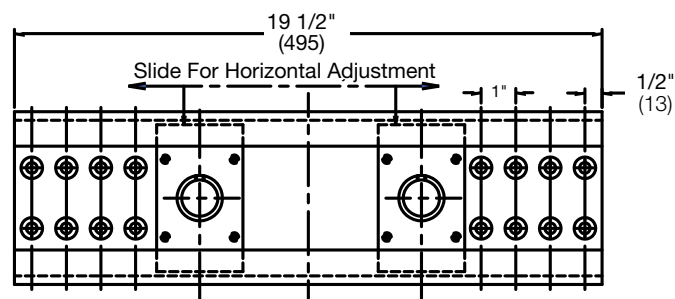
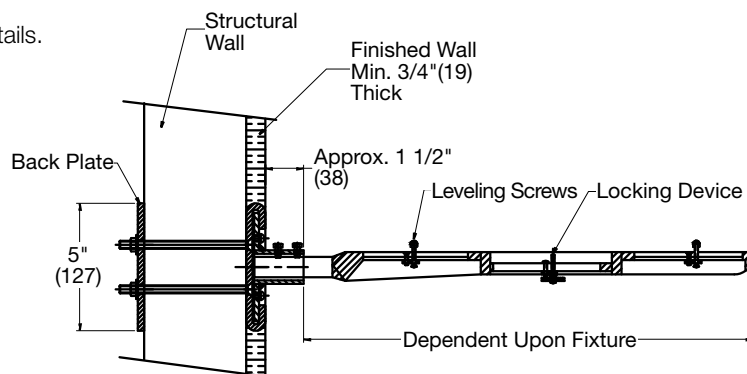
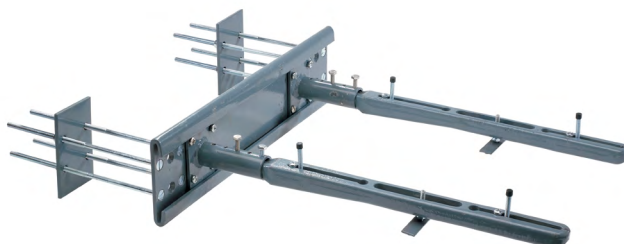
TCA-450

Wall Mounted Concealed Arm "27 x 20" "Track" Lavatory Carrier

Specification

Watts TCA-450 epoxy coated wall mounted concealed arm track lavatory carrier for 27" x 20" lavatories with heavy gauge steel cross plate and back up mounting plates, sliding adjustable arm brackets, adjustable epoxy coated cast iron arms with leveling screws and basin locking device, and plated hardware.

Call customer service if you need assistance with technical details.



NOTICE

The information contained herein is not intended to replace the full product installation and safety information available or the experience of a trained product installer. You are required to thoroughly read all installation instructions and product safety information before beginning the installation of this product.

Watts product specifications in U.S. customary units and metric are approximate and are provided for reference only. For precise measurements, please contact Watts Technical Service. Watts reserves the right to change or modify product design, construction, specifications, or materials without prior notice and without incurring any obligation to make such changes and modifications on Watts products previously or subsequently sold.



USA: T: (800) 338-2581 • Watts.com

Canada: T: (888) 208-8927 • Watts.ca

Latin America: T: (52) 55-4122-0138 • Watts.com

